

WILDLIFE RESPONSE SERVICES

Collaborating with leading organisations
to deliver global wildlife expertise

ENHANCED WILDLIFE SLA SERVICES

Technical advice from Sea Alarm

- 2 x TECHNICAL ADVISERS**
- 1 x on-site
 - 1 x remote support



GOWRS wildlife assessment team

- 4 x EXPERT ASSESSMENT TEAM**
- Ops/Planning Specialist
 - Field and Capture Specialist
 - Rehab and Facilities Specialist
 - Vet/Incident-specific Specialist



Wildlife response equipment

- CRITICAL EQUIPMENT FOR:**
- Search and rescue
 - Medical
 - Cleaning and rehabilitation





SEA ALARM ADVISERS

Two experts available 24/7 to assist client with:

- Remote advice and monitoring, analysing any unfolding scenarios with the potential to impact wildlife
- One expert ready to be deployed on-site to assist the Incident Management Team, connecting with relevant in-country stakeholders and responders
- Second expert providing online support, applying Sea Alarm's international connectivity

Strategic and tactical advice (assist Incident Action Planning) on aspects such as:

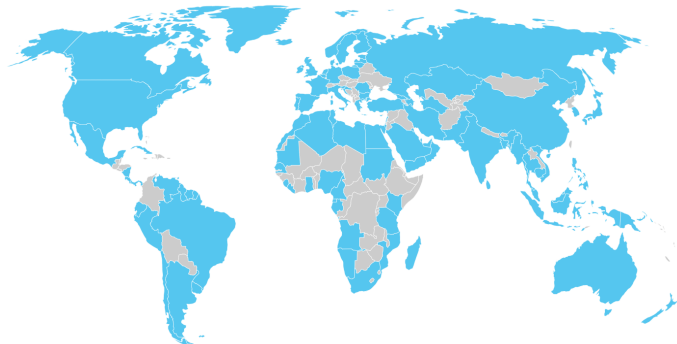
- Communications
- Planning and logistics
- Contribution of local resources (Tiers 1&2)
- Scaling up tiered response (including mobilisation and integration of Tier-3 hands-on response)

After client request, **fully integrated into OSRL activation and mobilisation procedures.**

SEA ALARM'S CONTRIBUTION

INTERNATIONAL CAPACITY BUILDING

- Preparedness building: authorities (local/national/regional), industry
- Network development and support, e.g. GOWRS, EUROWA
- Good practice development, e.g. Ipieca, Community of Practice, EUROWA
- Tools development: self-assessment, country and regional profiles, and simulation tools
- Training, planning, exercises: industry, countries and authority programmes responders, stakeholders



**20 years
of improving
awareness,
preparedness
and response**

**SEA
ALARM**

SLA SERVICE

24/7 incident response assistance:

- Scenario assessment/gap analysis
- Strategic/tactical/technical advice
- Tiered response effectiveness
- Stakeholder management



GOWRS ASSESSMENT TEAM

- **Ready-to-deploy**
- **Available 24/7**
- **Assess** on-the-ground conditions
- **Evaluate** the need for a full scale response when Tier 1 and Tier 2 capabilities have been exceeded
- **Inform** client on capability and potential providers of full-scale Tier 3 wildlife operations
- **Fully integrated** into OSRL activation and mobilisation procedures
- **200+ years of combined experience**

ADDITIONAL CONSULTANCIES

- Planning
- Exercises
- Training
- Preparedness





GOWRS ASSESSMENT TEAM: **FUNCTIONS**

FORTIFIES COMMAND STRUCTURE

- Works within client's IMS
- Coordinates with client's Wildlife Branch Director
- Completes necessary reporting, documentation, and recommendations



**Wildlife
ops/planning
specialist**

ASSESSES SPILL SITE DYNAMICS

- Determines local species experts/info
- Conducts real-time reconnaissance efforts
- Recommends capture and deterrence/hazing techniques and requirements



**Field/
capture
specialist**

BRINGS CRITICAL EXPERTISE

- Tailored to incident-specific needs (e.g. animal taxa, veterinary science, local knowledge)
- Recommends needed resources and actions

**Veterinarian
or incident-
specific
specialist**



**Rehab/
facility
specialist**



ASSESSES LOCAL CAPACITY

- Determines local care providers
- Identifies appropriate facility options
- Determines needed permits, protocols, and agreements
- Recommends necessary resources

THE GOWRS SERVICE AND YEAR-ROUND PROGRAM



Assessment services

- Assessment team during incidents
- Oiled wildlife exercises

Additional consultancies available

- Wildlife planning
- External trainings
- Additional exercises
- Company preparedness

Preparedness program

- Maintain international standards
- Regular meetings/skills exchange
 - Exercises (internal)
 - Maintain SOP
- Internal training programs
 - GOWRS coordinator
- United voice/advocacy/
international cooperation





OSRL OILED WILDLIFE EQUIPMENT

Recently updated and standardised for all operational bases:

- Support the first 48 hours of response
- Focus on birds
- Critical equipment for:
 - Search and rescue
 - Medical
 - Cleaning and rehabilitation
- 50% stockpile available to our members

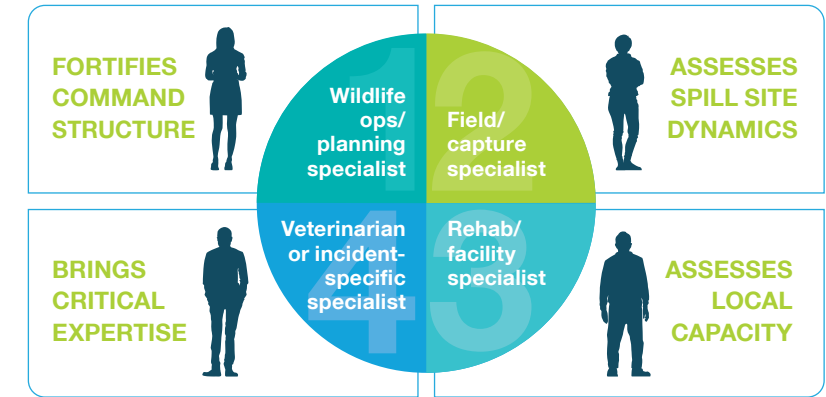


WILDLIFE SLA SERVICES

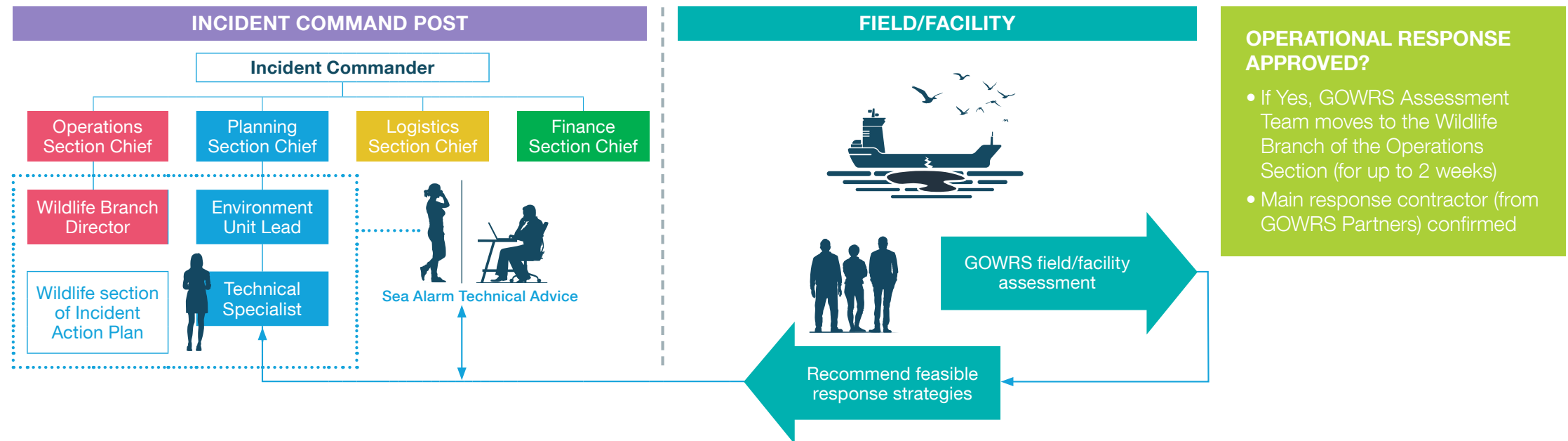
Sea Alarm Technical Advisers



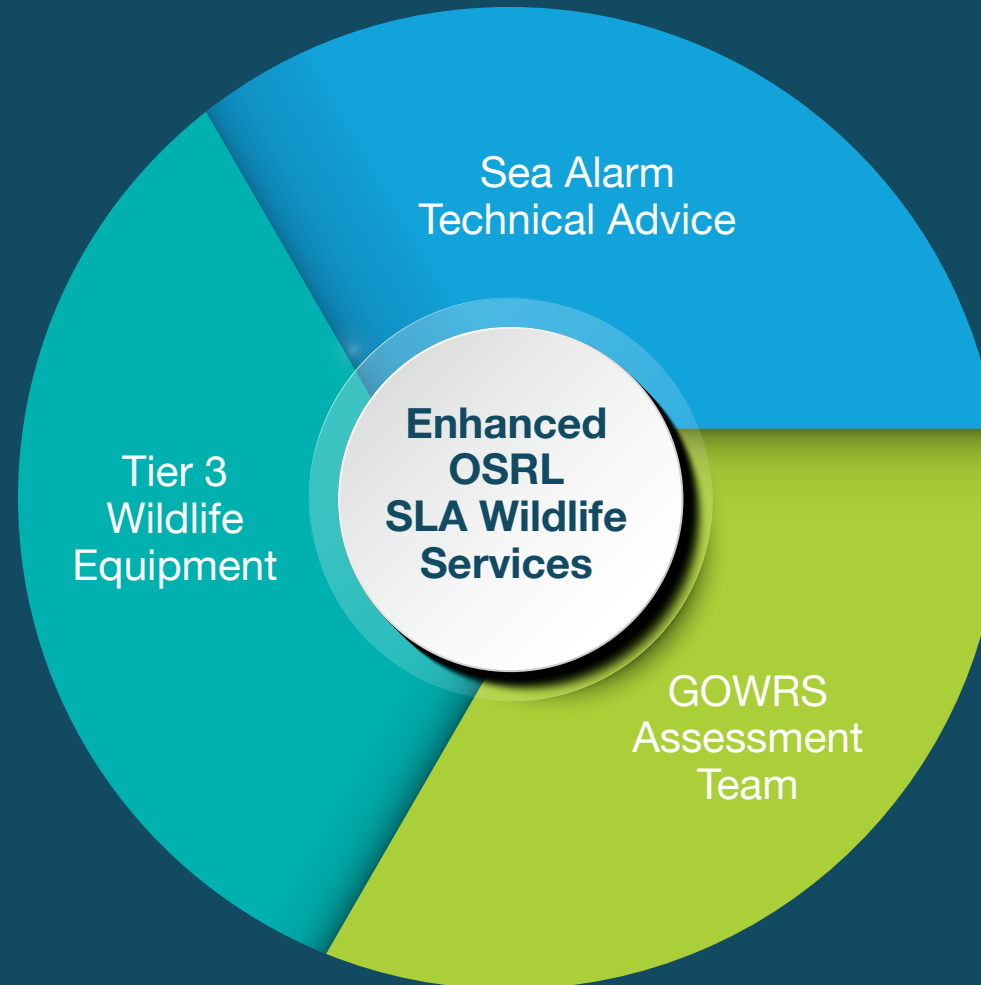
GOWRS Assessment Team



WILDLIFE SLA SERVICES IN A RESPONSE



SUMMARY



- **Enhanced OSRL Wildlife SLA =**
Sea Alarm + GOWRS + Equipment
- Mobilised via the OSRL Duty Manager
- The right experts on the ground and remote support
- 24/7 availability